



# Zeotech Corporation

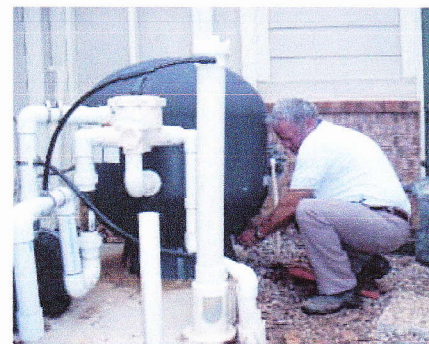
## **ZEOBRITE® POOL FILTER MEDIA INSTALLATION GUIDELINE**



**Step 1.** Turn-off power to filter pump. Turn multi-port valve to the closed position. Clear work area and observe all safety precautions. For new filter installations, skip to Step 5.



**Step 2.** Release air pressure from filter tank. Carefully remove filter tank cover and move distributor for access to media bed. (Consult filter manufacturer's manual for specific directions concerning filter piping)



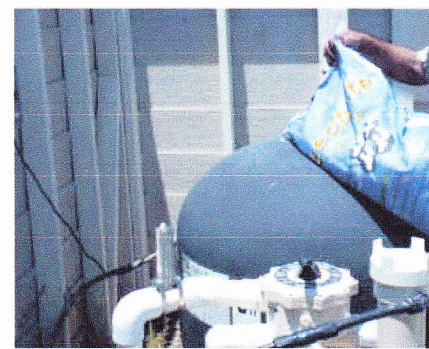
**Step 3.** If filter is equipped with a drain plug, remove drain plug and drain water from filter tank.



**Step 4.** Remove existing sand media from filter tank. A heavy-duty shop vac comes in handy for this step. Otherwise remove by hand, or if filter is equipped with a sand drain plug, remove plug and washout sand through the drain.

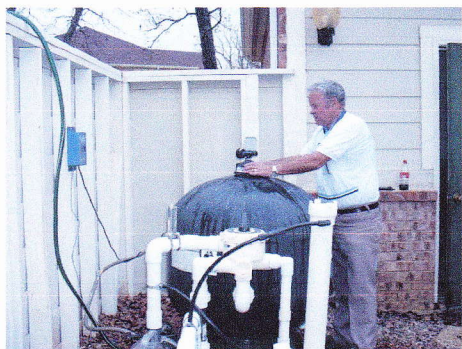


**Step 5.** After removing sand, rinse and clean filter tank. Inspect laterals and piping for defects, repair if needed. Inspect multi-port valve for proper operation. Replace drain plugs and fill bottom 1/3 of filter tank with water.

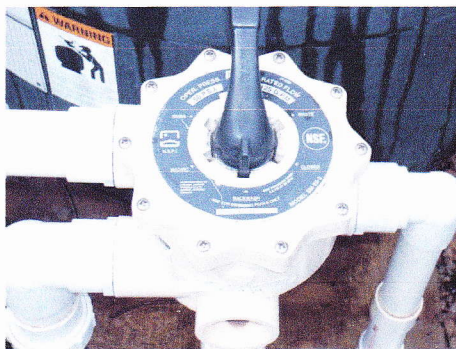


**Step 6.** Fill filter tank with the required amount of Zeobrite Filter Media. (Note: Zeobrite weighs 50% less than sand per cubic foot, therefore, it requires 50% less weight of Zeobrite versus sand.) See the Media Requirement Chart below.

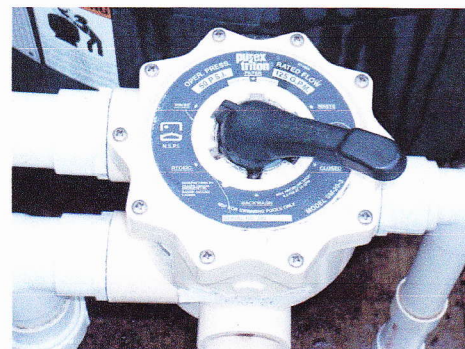




STEP 7. Return the interior standpipe to its proper position, check the distributor and any other parts previously disturbed. Replace the filter cover. Check exterior piping and plumbing to insure that the filter is in proper working condition.



Step 8. Turn multi-port valve to the backwash position. Start filter pump and backwash the media until the water in the site glass is clear (usually 2-3 minutes). Turn-off filter pump and proceed to Step 9



Step 9. After backwash, move multi-port valve to the rinse position and run until water clears in the site glass. Turn-off filter pump, move multi-port valve to the closed position and proceed to Step 10.

Step 10. After the first backwash and rinse cycle, allow the media bed to settle 3 to 5 minutes. Afterwards, repeat Steps 8 and 9 two more times, allowing the media bed to settle between those two cleaning cycles. After completing the last backwash and rinse cleaning cycles, turn-off the filter pump and move the multi-port valve to the filter cycle. Turn the filter pump on and note the starting pressure on the filter gauge. The starting pressure is typically around 8 - 10 psi. Allow the system to run on the filter cycle until the pressure rises and additional 5 to 7 psi before backwashing the filter media. Secondary backwashes can be performed by using Steps 8 and 9 one time only.

**IMPORTANT: Follow backwashing instructions in Steps 8, 9 and 10.**

## SAMPLE MEDIA REQUIREMENT CHART

Tank Diameter	Filter Area Approx. Sq. Ft.	All Sand	All Zeobrite	Dual Filter Media (Lbs)		
		<u>Lbs</u>	<u>Lbs</u>	<u>Pea Gravel</u>	<u>Sand</u>	<u>Zeobrite</u>
19"	1.92	150	75	50	100	50
21"	2.46	200	100	50	150	100
24"	3.14	300	150	100	250	150
30"	4.91	600	300	150	450	250
36"	7.06	900	450	250	650	350

Note: Pea gravel can be used in all size filters. We recommend using pea gravel in all filters that are 30" and above in diameter. Use pea gravel that is specifically made for swimming pool filters. Follow the chart above for Dual Filter Media for the conversion rate of Zeobrite.