



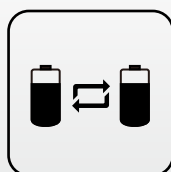
AE3C Solar Street Light (Split Type)

The AE3C series solar light absorb energy from the sun and turn it to illumination when it is dark. The unit contains the 'ALL IN ONE' solar engine and single LED lamp. Their integrated photo voltaic module, Lithium battery, human infrared sensor and newly developed MPPT charging controller and LED lamp to achieve multiple features such as high luminance, long lifespan, minimal maintenance and easy installation.

By choosing a wireless module (Bluetooth, 433 or GPRS), users can wirelessly control the light, monitor working status, custom a working mode or review historical charging data. AE3C bring you a easier way to control the outdoor lighting than even before.



**MPPT
Controller**



**Battery
Management
System**



CREE LED



**Infrared
Motion
Sensor**



**Wireless
Control
System**



IP65

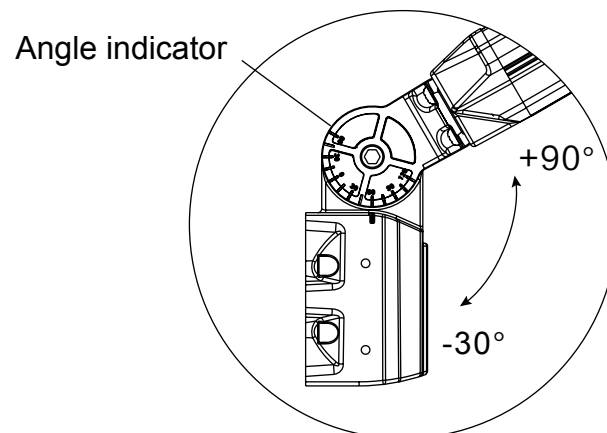
1



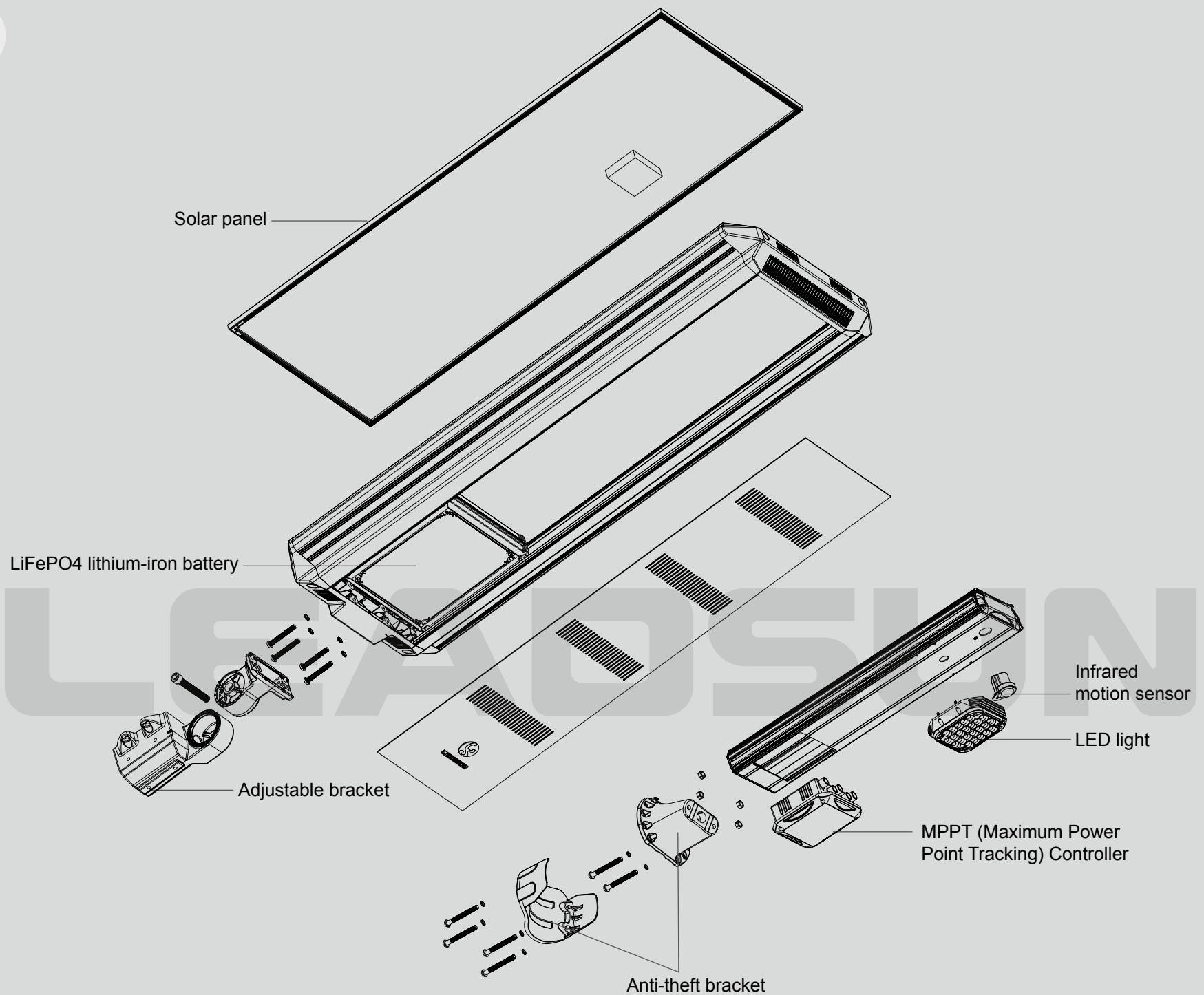
Split Design

The AE3C split units can capture the maximum energy by setting direction of solar engine facing to the strongest solar radiation while lamp face to the site you want to illuminate.

With split design, users will take the benefit of flexible installation as well as all in one features.



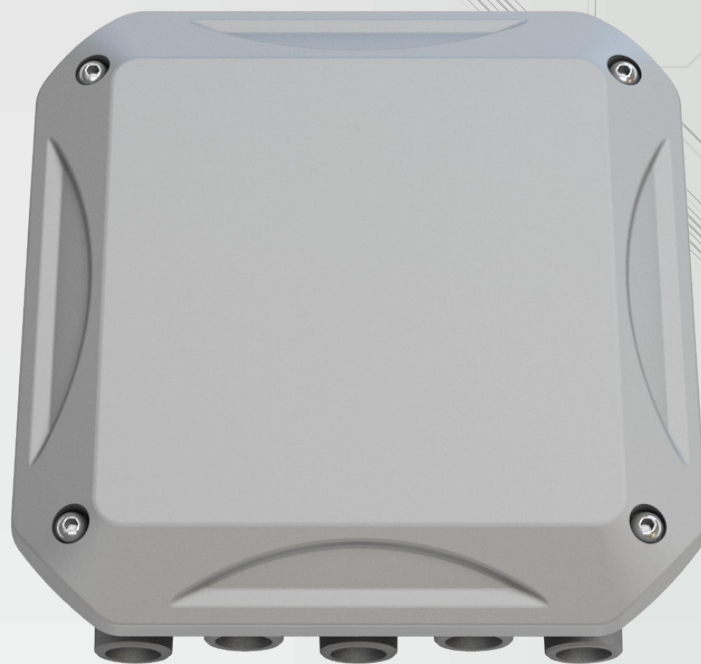
The adjustable bracket can be adjusted range from -30° to +90° (each scale is 6 degree).



Product Structure

Major components is Modularity design with IP65 rate, which is easy assemble and maintenance.

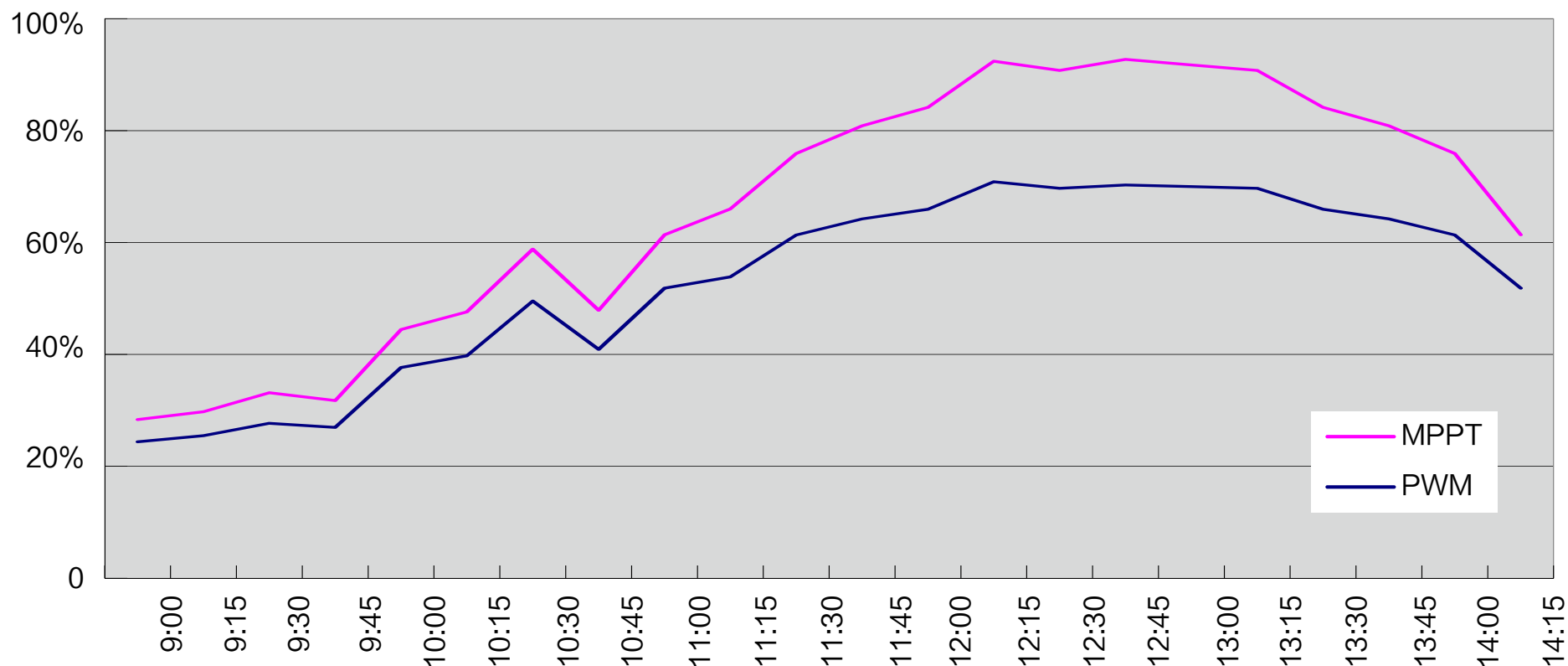
IP65 rated components ensure endurance against harsh weather and keep AE Series free from corrosion and premature failure.



MPPT Controller

MPPT (maximum power point tracking) controller automatically track the maximum power point according to the weather variation. Its charging rate is **16~30%** higher than PWM controller.

Charging efficiency contrast *





Battery Management System

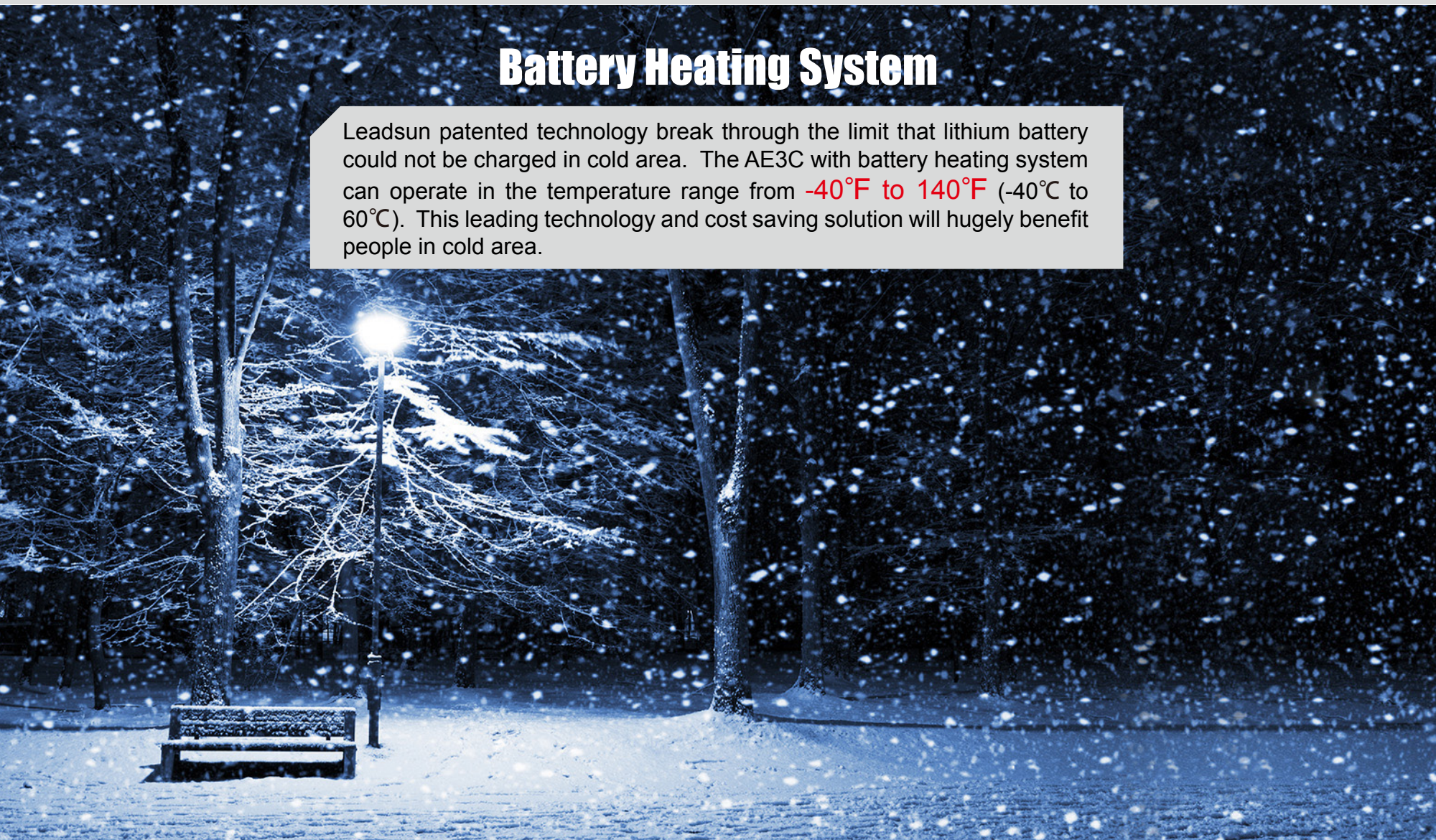
Adopted advanced LiFePO₄ lithium-iron battery. Compared with lead-acid battery, LiFePO₄ battery discharge depth is **4 times** higher and its cycle life is **5 times** longer than lead-acid battery.

Battery long lifespan is up to 8 years with Leadsun patented battery management technology.

LEADSUN

Battery Heating System

Leadsun patented technology break through the limit that lithium battery could not be charged in cold area. The AE3C with battery heating system can operate in the temperature range from **-40°F to 140°F** (-40°C to 60°C). This leading technology and cost saving solution will hugely benefit people in cold area.



5

CREE LED

Adopted CREE 5 watts LED with average light illumination of 130lm @350mA, 85℃.

Bat wing light distribution

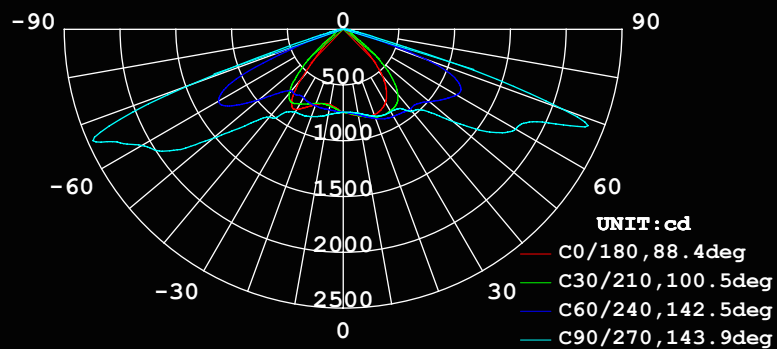
Leadsun new design light distribution lens widely improve illumination effect.

Compared with the last generation product, illumination area enlarge **40%** more, and illumination uniformity does improve up to **200%**.

12W

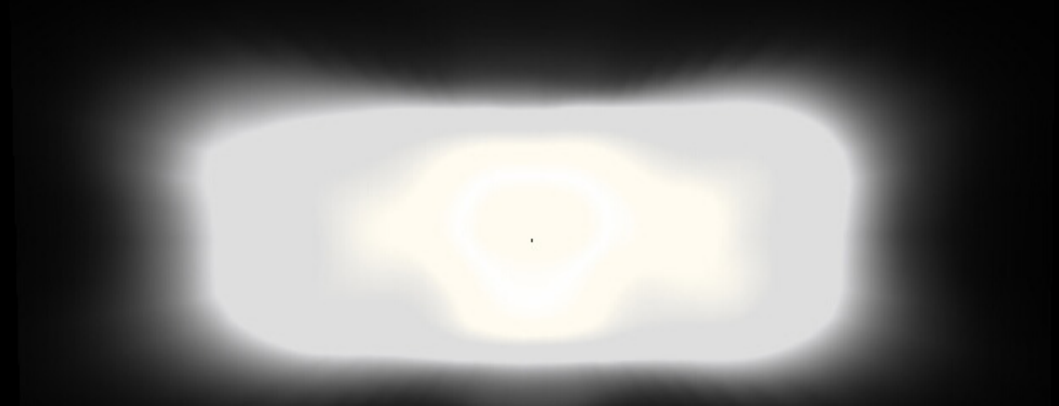
30W

Bat wing light distribution curve



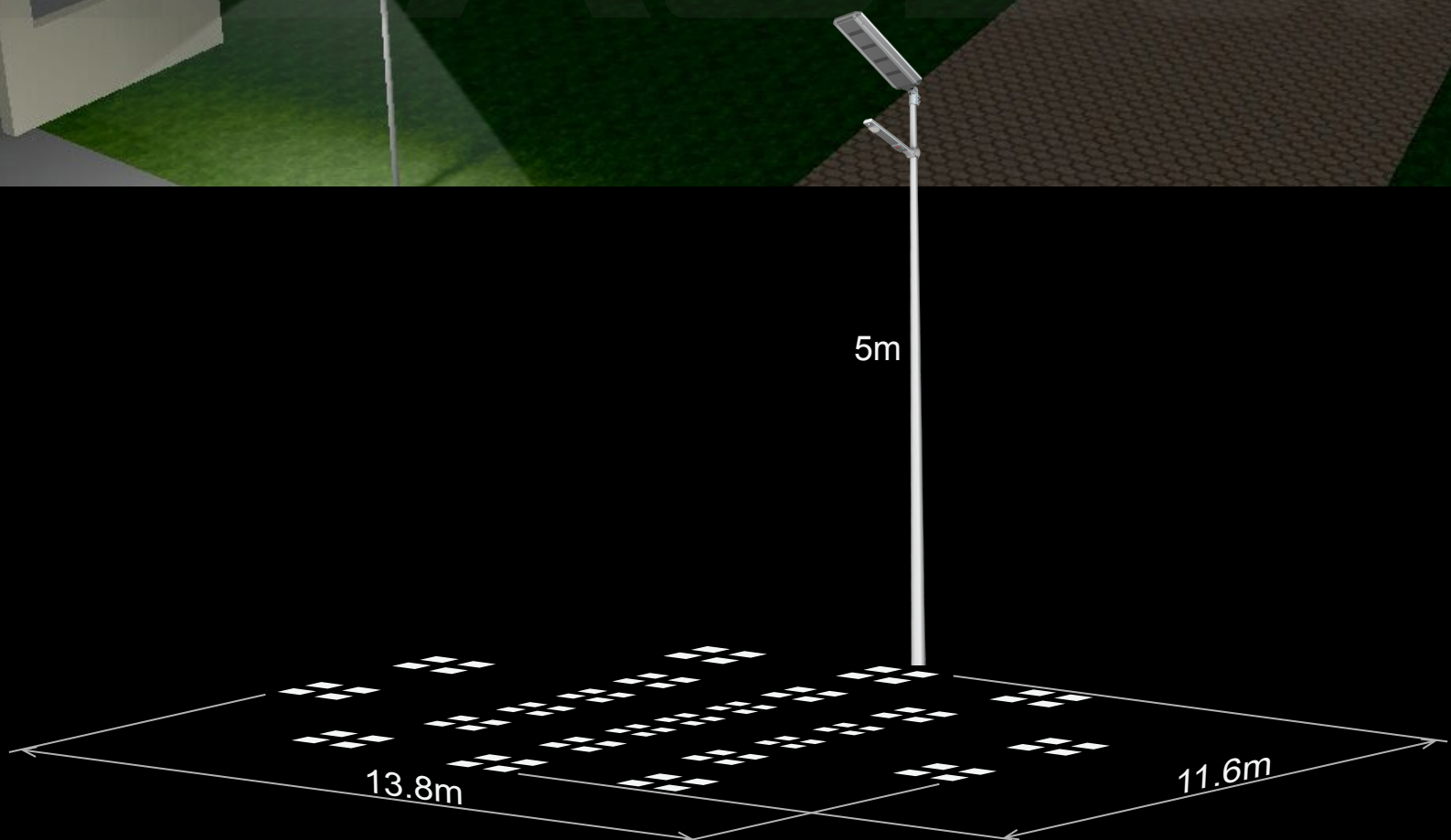
AVERAGE BEAM ANGLE (50%): 118.8 DEG

Light intensity diagram



Motion detection

The AE3C series comes complete with built-in motion detection system that automatically regular the light source from full bright (100%) to the energy saving output (30%) to increase battery autonomy.



Infrared motion sensor detection area

LIVESUN[®] Wireless System

By choosing a wireless module (Bluetooth, 433 or GPRS), users can wirelessly control the light, monitor working status, set custom working mode or review historical charging data. AE3C bring endusers a easier way to control their outdoor lighting than even before.



You can do below through LIVESUN:

Control the light

Turn ON or turn OFF the light and change light intensity in the range of 10% to 100%.

Track historical data

Review monthly report to track every day's power generation, inner temperature and detail records for charging and discharge.

Set custom working mode

Users can set their own working mode according to the local solar irradiance or peak sun hours and other lighting requirement.

Real-time supervision

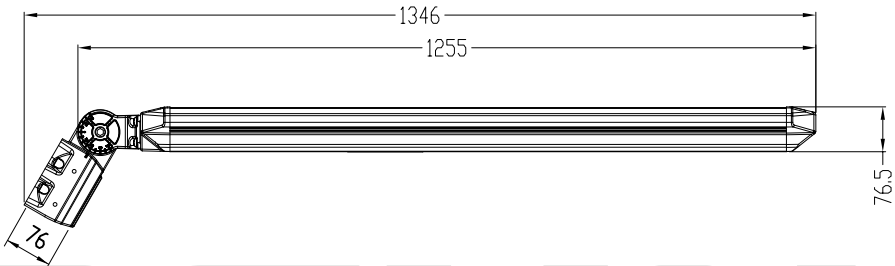
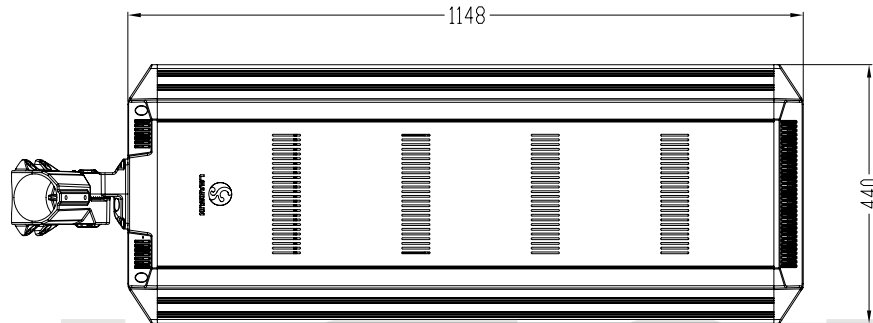
Monitor the status of main components and real time charging / discharging data.

Technical Data

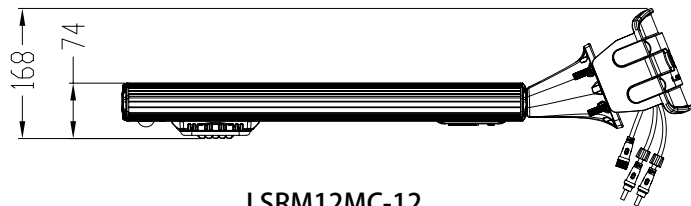
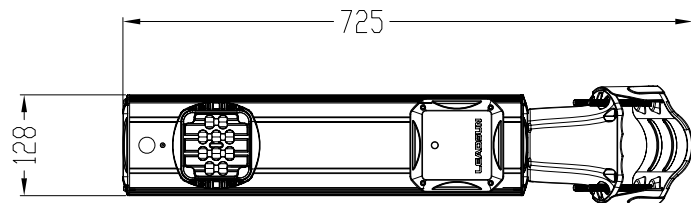
●: Standard, ○: Optional, /: N/A

Solar Power System			RHEA MINI LED Light		
Model No.		AE3CS70N	AE3CSH70L	LSRM12MC-12	LSRM30MC-12
Physical Parameters					
Max. Power of LED Chips		/	/	CREE 5W LED	CREE 5W LED
Qty. of LED Chips		/	/	10pcs	24pcs
PV Module Power		70W	70W	/	/
Liuthium Battery Capacity		346WH	230WH	/	/
PIR Sensor		/	/	●	●
Battery Heating Function		/	●	/	/
Wireless System	Bluetooth	/	/	○	○
	433MH	/	/	○	○
	GPRS	/	/	○	○
Net Weight of Product		16.8Kg	16.4Kg	3.6Kg	3.8Kg
Demension of Carton		1325(L)×170(W)×510(T)mm		760(L)×220(W)×240(T)mm	
Gross Weight of Product		19.4Kg	19.0Kg	5.0Kg	5.2Kg
Light Parameters					
Light Output (Factory setting)		/	/	12W	30W
Optical Distribution		/	/	Bat Wing	Bat Wing
Visual Angle		/	/	140°× 70°	140°× 70°
Color Temperaure		/	/	5000K	5000K
Luminous Flux (Typical)		/	/	1440lm	3600lm
Environment Requirement					
Charge Temperature		32°F~140°F (0°C~60°C)	-40°F~140°F (-40°C~60°C)	/	/
Discharge Temperature		-4°F~140°F (-20°C~60°C)	-40°F~140°F (-40°C~60°C)	/	/
Storage Temperature		-4°F~113°F (-20°C~45°C)	-4°F~113°F (-20°C~45°C)	-4°F~113°F (-20°C~45°C)	-4°F~113°F (-20°C~45°C)
Installation Suggest					
Recommended Installation Height		/	/	3~6m	5~8m
Recommended Installation Distance		/	/	12~22m	25~35m

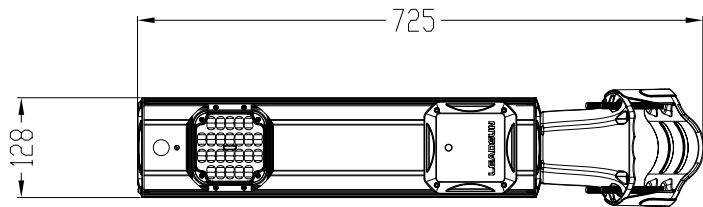
Physical Dimensions (mm)



AE3CS70N / AE3CSH70L



LSRM12MC-12



LSRM30MC-12



LEADSUN[®]

To promote an environmentally sympathetic
and socially conscious world through
superior technology and innovation.

We strive for harmony between technology
and the environment to help people lead
healthier and more productive lives.

LEADSUN

LEADSUN INTERNATIONAL LIMITED reserves the rights to amend and improve the product appearance, construction and function without any prior notification. Please make the original product as the standard in case of any difference in description.

LEADSUN guarantees that this specification has been checked and edited, but does not hold the responsibility for any loss caused.

LEADSUN INTERNATIONAL LIMITED

Tel: +86-756-2289712 Fax: +86-756-8682090

E-mail: sales@leadsunglobal.com

www.leadsunglobal.com

AE3CS-A02

