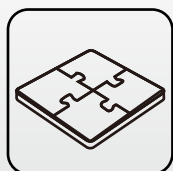


AE2 Swivel Type All In One Solar Street Light (2015 Version)

AE2 Series is the world's first 'All-In-One' solar powered LED light. Fully integrated all of its components and motion sensor within an attractive and compact design, AE2 not only saves more energy but also improved light efficiency. By critically choosing advanced Li-ion battery and corrosion resistant material, we created at least three times longer lifespan and extremely simple way for installation solar street light compare with traditional one that equipped with lead acid battery. AE2 redefined solar street light in both intension and extension.

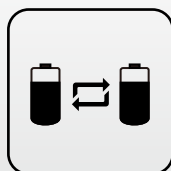
AE2 'Swivel' (2015 Version) is applying revolutionary technology developments of MPPT(Maximum Power Point Tracking) controller, improved LED lens and Multi-platform wireless controlling system to deliver the most intelligent solar lighting solution available today.



All In One Design



**MPPT
Controller**



**Battery
Management
System**



CREE LED



**Infrared
Motion
Sensor**

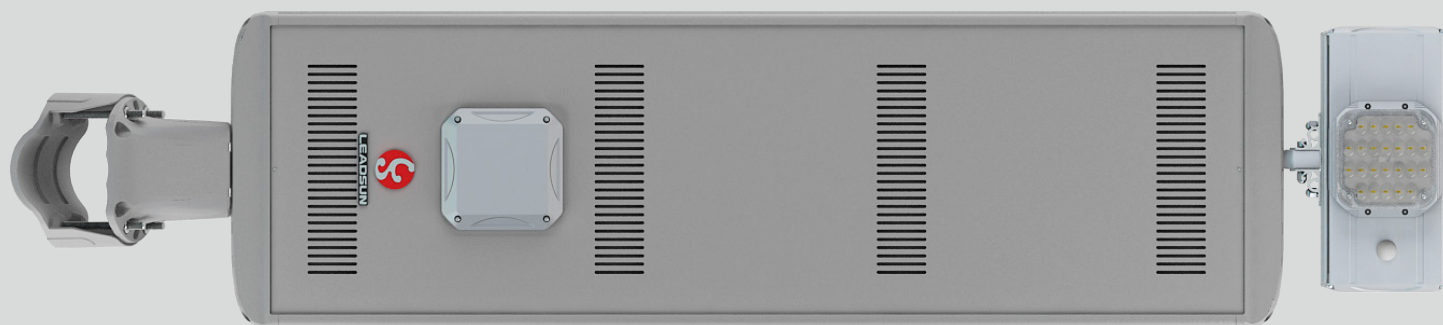


**Wireless
Control
System**



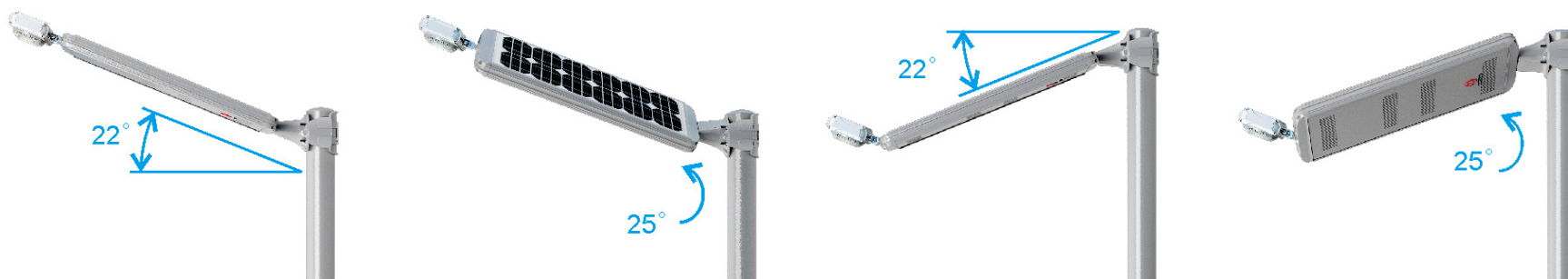
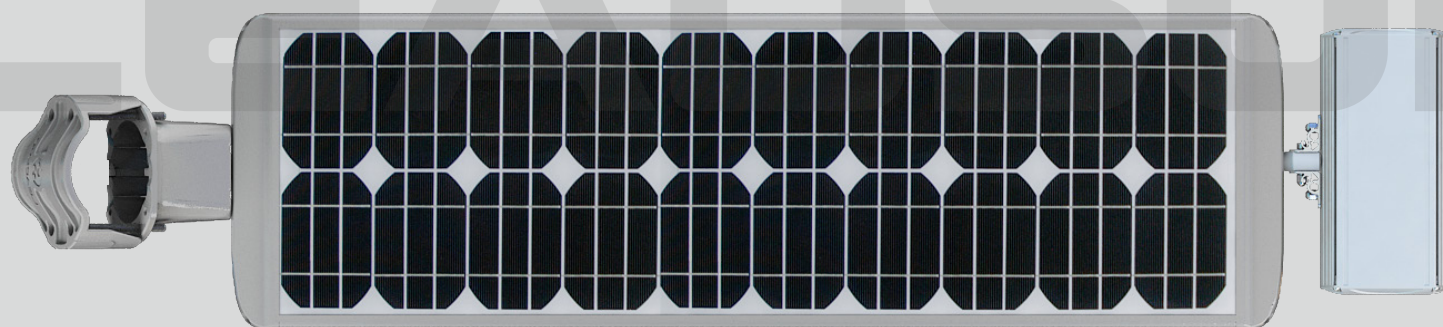
IP65

1

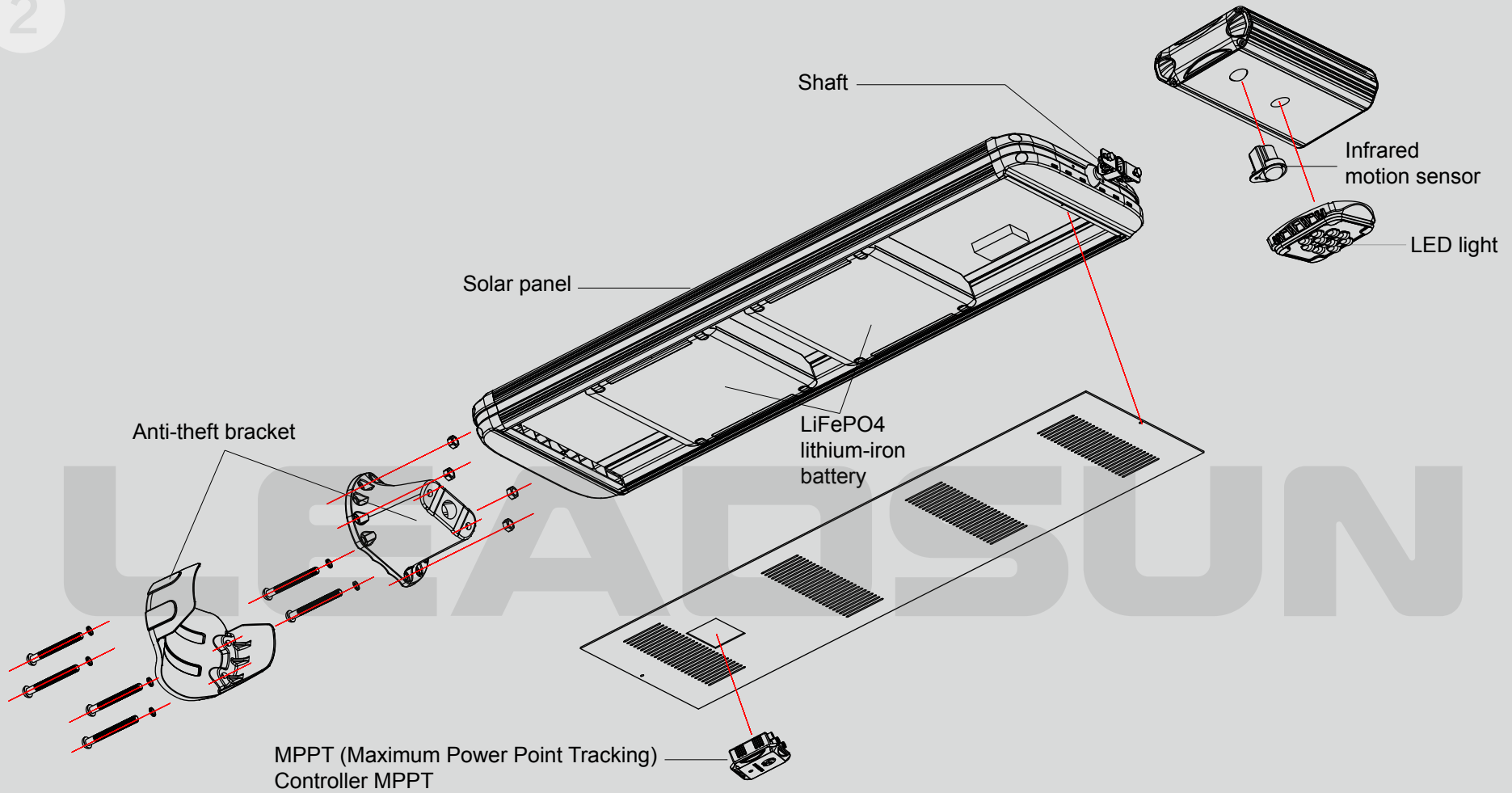


All In One Design

Their integrated photovoltaic module, charging controller and LiFePO4 battery combine with high output LEDs and human infrared sensor to achieve multiple features such as high luminance, long lifespan, minimal maintenance and easy installation.



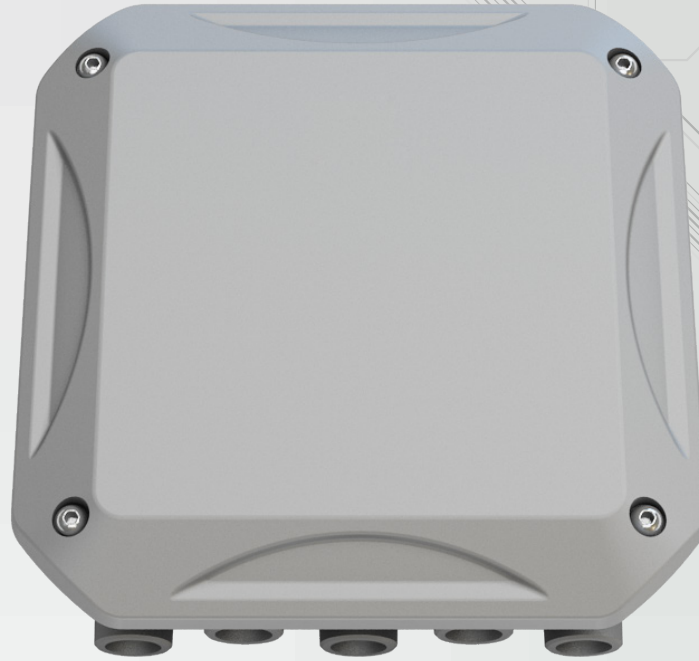
AE2 (Swivel Type) has an adjustable bracket and cardan shaft, end-users can set the PV panel and light direction according to the sun position and individual lighting requirement.



Product Structure

Major components is Modularity design with IP65 rate, which is easy assemble and maintenance.

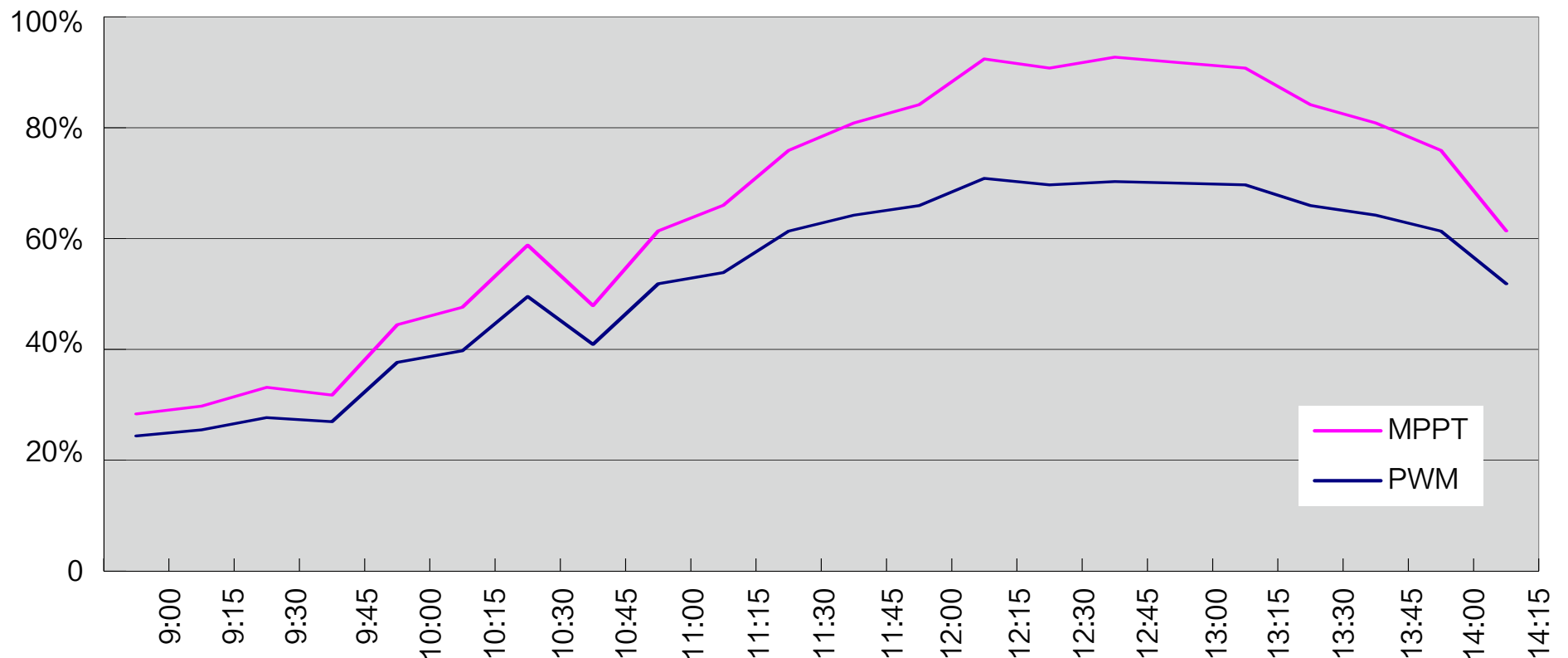
IP65 rated components ensure endurance against harsh weather and keep AE Series free from corrosion and premature failure.

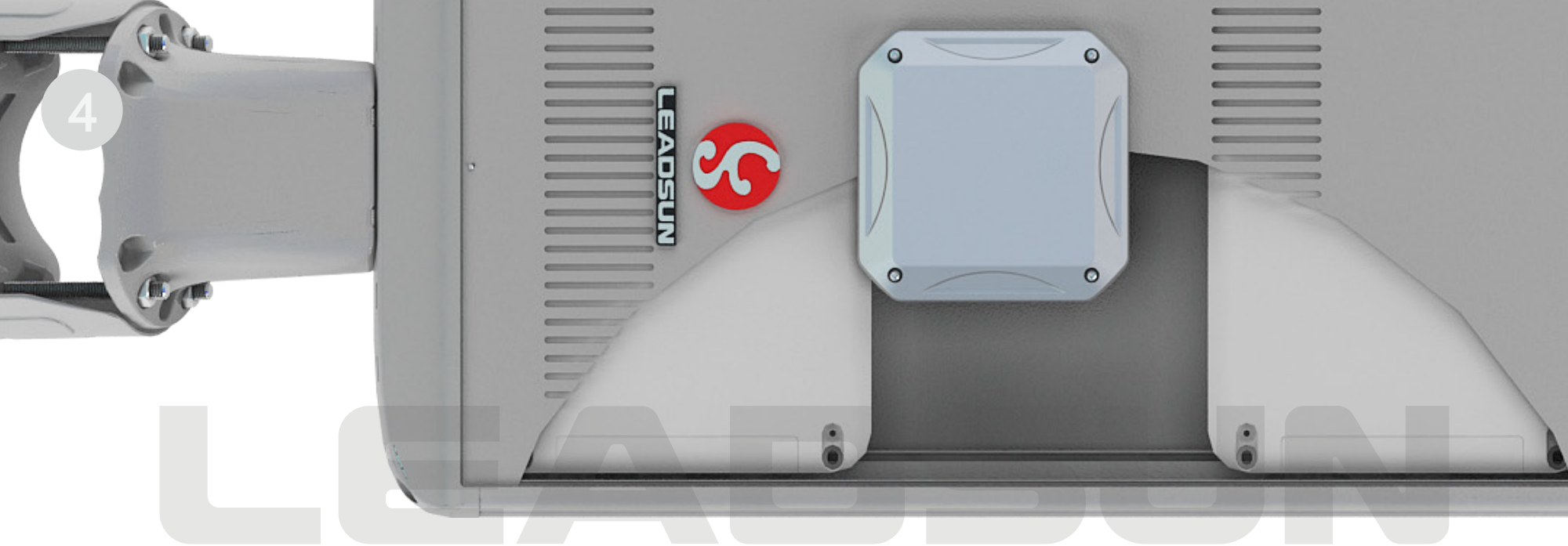


MPPT Controller

MPPT (maximum power point tracking) controller automatically track the maximum power point according to the weather variation. Its charging rate is **16~30%** higher than PWM controller.

Charging efficiency contrast *





Battery Management System

Adopted advanced LiFePO₄ lithium-iron battery. Compared with lead-acid battery, LiFePO₄ battery discharge depth is **4 times** higher and its cycle life is **5 times** longer than lead-acid battery.

Battery long lifespan is up to 8 years with Leadsun patented battery management technology.

5

CREE LED

Adopted CREE 5 watts LED with average light illumination of 130lm @350mA, 85℃.

Bat wing light distribution

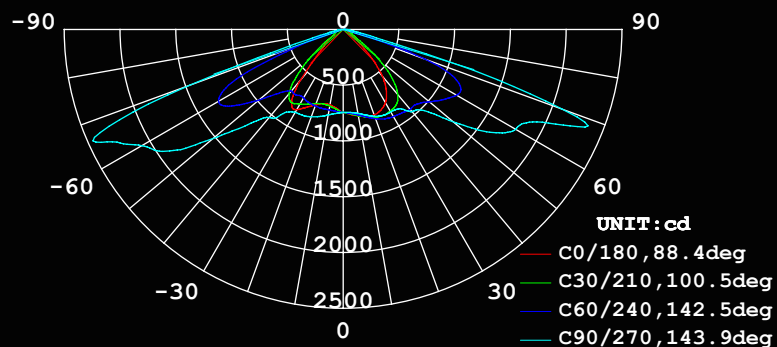
Leadsun new design light distribution lens widely improve illumination effect.

Compared with the last generation product, illumination area enlarge **40%** more, and illumination uniformity does improve up to **200%**.

12W

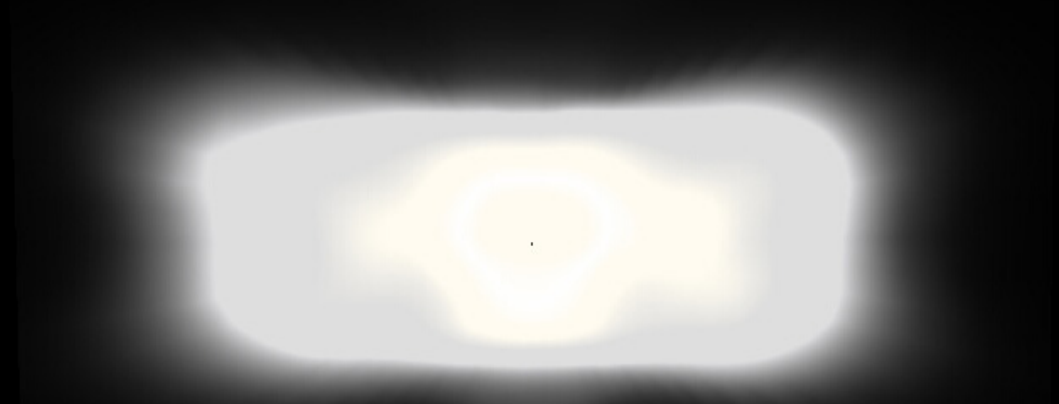
20W

Bat wing light distribution curve



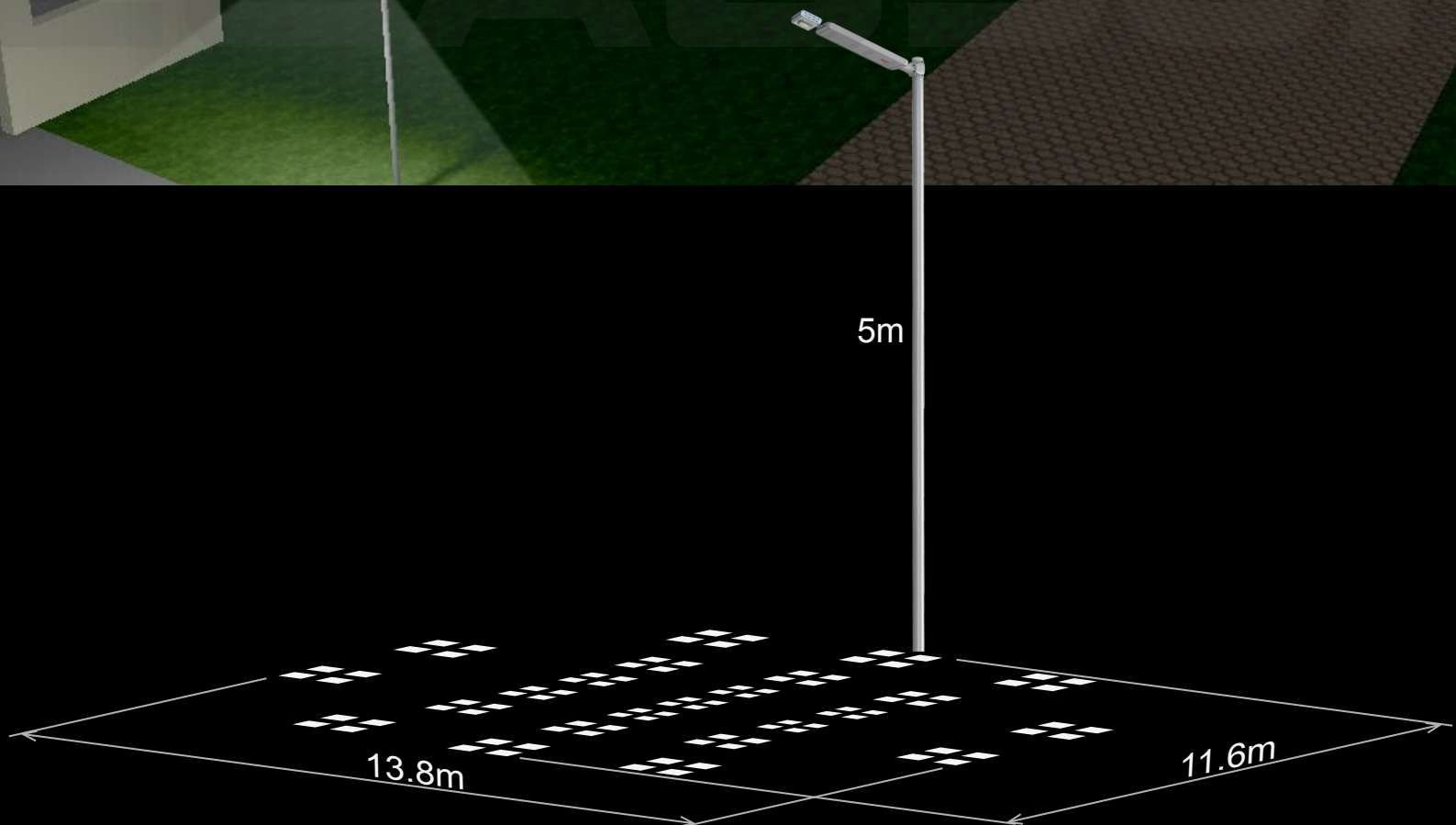
AVERAGE BEAM ANGLE (50%) : 118.8 DEG

Light intensity diagram



Motion detection

The AE2 series comes complete with built-in motion detection system that automatically regular the light source from full bright (100%) to the energy saving output (30%) to increase battery autonomy.



Infrared motion sensor detection area

LIVESUN[®] Wireless System

By choosing a wireless module (Bluetooth, 433 or GPRS), users can wirelessly control the light, monitor working status, set custom working mode or review historical charging data. AE2 bring endusers a easier way to control their outdoor lighting than even before.



You can do below through LIVESUN:

Control the light

Turn ON or turn OFF the light and change light intensity in the range of 10% to 100%.

Track historical data

Review monthly report to track every day's power generation, inner temperature and detail records for charging and discharge.

Set custom working mode

Users can set their own working mode according to the local solar irradiance or peak sun hours and other lighting requirement.

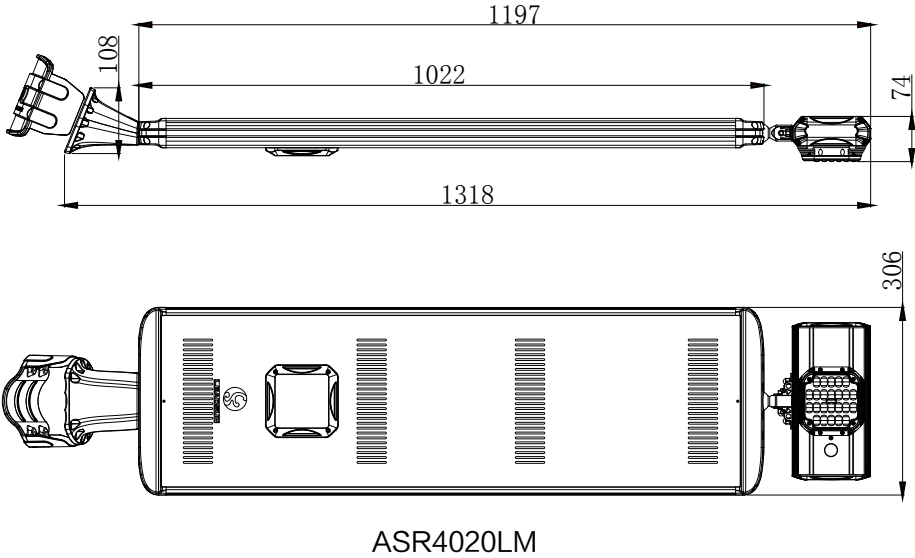
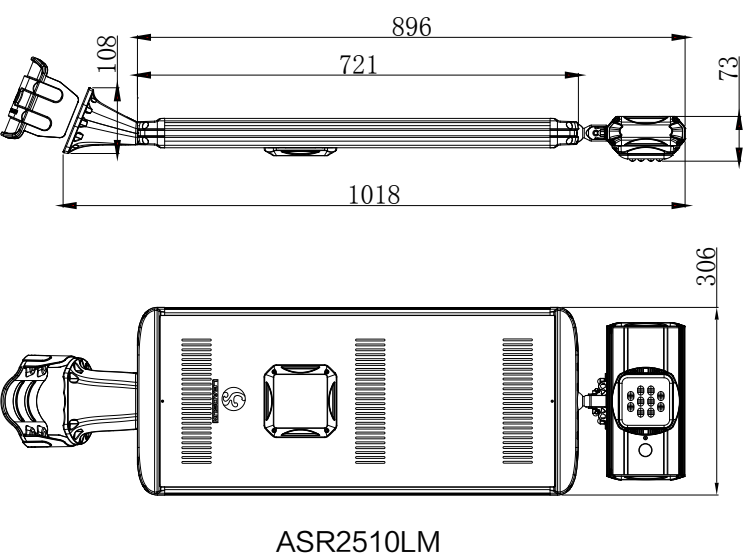
Real-time supervision

Monitor the status of main components and real time charging / discharging data.

Technical Data ●: Standard, ○: Optional, /: N/A

Model No.		ASR2510IM	ASR4020LM
Physical Parameters			
Max. Power of LED Chips		CREE 5W LED	CREE 5W LED
Qty. of LED Chips		10pcs	24pcs
PV Module Power		25W	40W
Liuthium Battery Capacity		154WH	230WH
PIR Sensor		●	●
Wireless System	Bluetooth	○	○
	433MH	○	○
	GPRS	○	○
Physical Dimensions		1018(L)×306(W)×108(T)mm	1318(L)×306(W)×108(T)mm
Net Weight of Product		10.5Kg	14Kg
Light Parameters			
Light Output (Factory setting)		10W	20W
Optical Distribution		Bat Wing	Bat Wing
Visual Angle		140°× 70°	140°× 70°
Color Temperaure		5000K	5000K
Max. Luminous Flux		1200lm	2400lm
Min. Working Time	Bright Mode	14h	10h
	DIM Mode (30%)	46h	33h
Light Photosensitivity		30lx	30lx
Environment Requirement			
Charge Temperature		0℃~60℃	0℃~60℃
Discharge Temperature		-20℃~60℃	-20℃~60℃
Storage Temperature		-20℃~45℃	-20℃~45℃
Installation Suggest			
Recommended Installation Height		3~5m	4~7m
Recommended Installation Distance		12~20m	20~30m
Recommended Diameter of Lamppost		60~90mm	60~90mm

Physical Dimensions (mm)

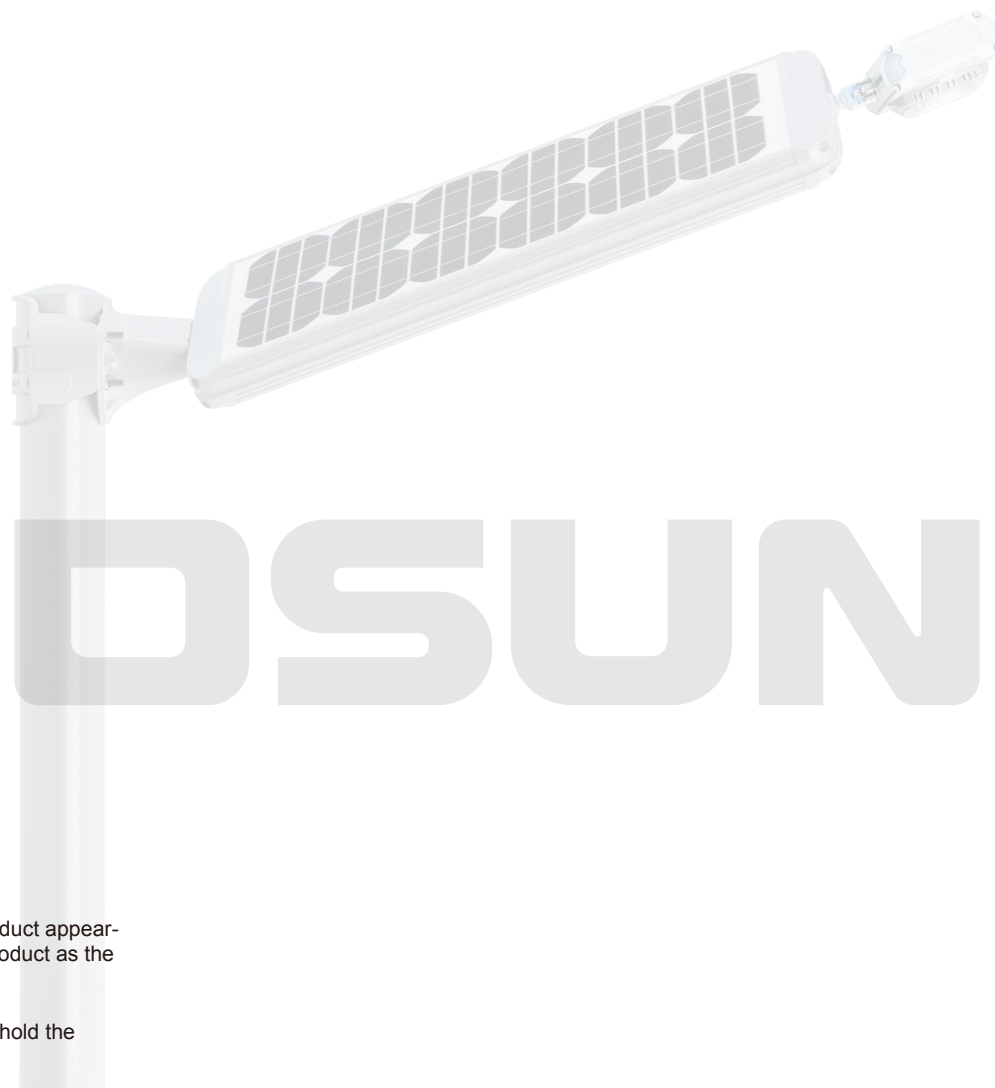




LEADSUN®

To promote an environmentally sympathetic
and socially conscious world through
superior technology and innovation.

We strive for harmony between technology
and the environment to help people lead
healthier and more productive lives.



LEADSUN INTERNATIONAL LIMITED reserves the rights to amend and improve the product appearance, construction and function without any prior notification. Please make the original product as the standard in case of any difference in description.

LEADSUN guarantees that this specification has been checked and edited, but does not hold the responsibility for any loss caused.

LEADSUN INTERNATIONAL LIMITED

Tel: +86-756-2289712 Fax: +86-756-8682090

E-mail: sales@leadsunglobal.com

www.leadsunglobal.com

ASR-A01

