



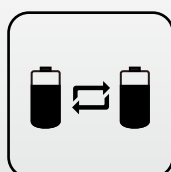
AE2 Split Type All In One Solar Street Light (2015 Version)

AE2 Series is the world's first 'All-In-One' solar powered LED light. Fully integrated all of its components and motion sensor within an attractive and compact design, AE2 not only saves more energy but also improved light efficiency. By critically choosing advanced Li-ion battery and corrosion resistant material, we created at least three times longer lifespan and extremely simple way for installation solar street light compare with traditional one that equipped with lead acid battery. AE2 redefined solar street light in both intension and extension.

AE2 'Split' (2015 Version) is applying revolutionary technology developments of MPPT(Maximum Power Point Tracking) controller, improved LED lens and Multi-platform wireless controlling system to deliver the most intelligent solar lighting solution available today.



**MPPT
Controller**



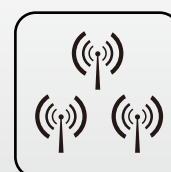
**Battery
Management
System**



CREE LED



**Infrared
Motion
Sensor**

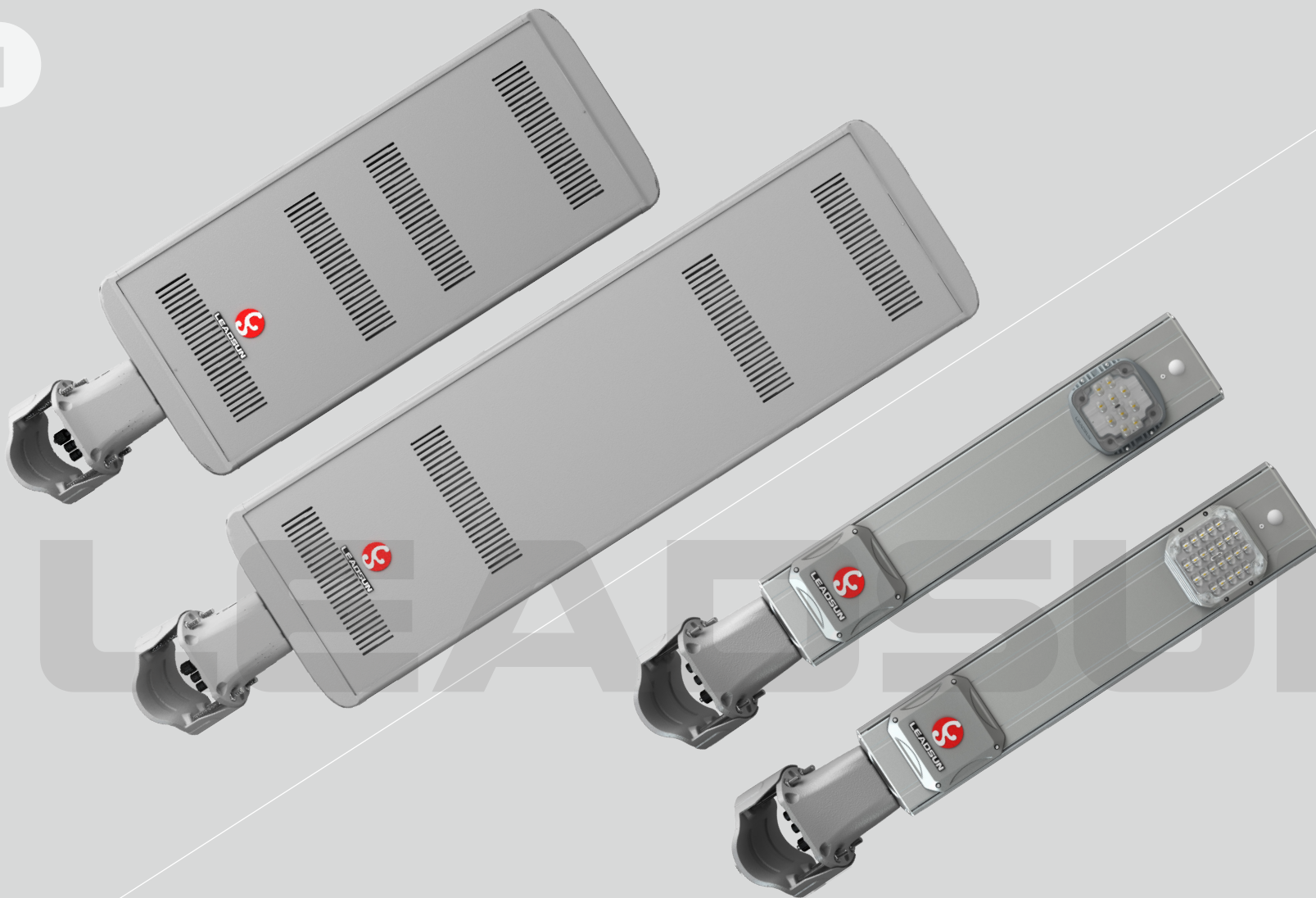


**Wireless
Control
System**



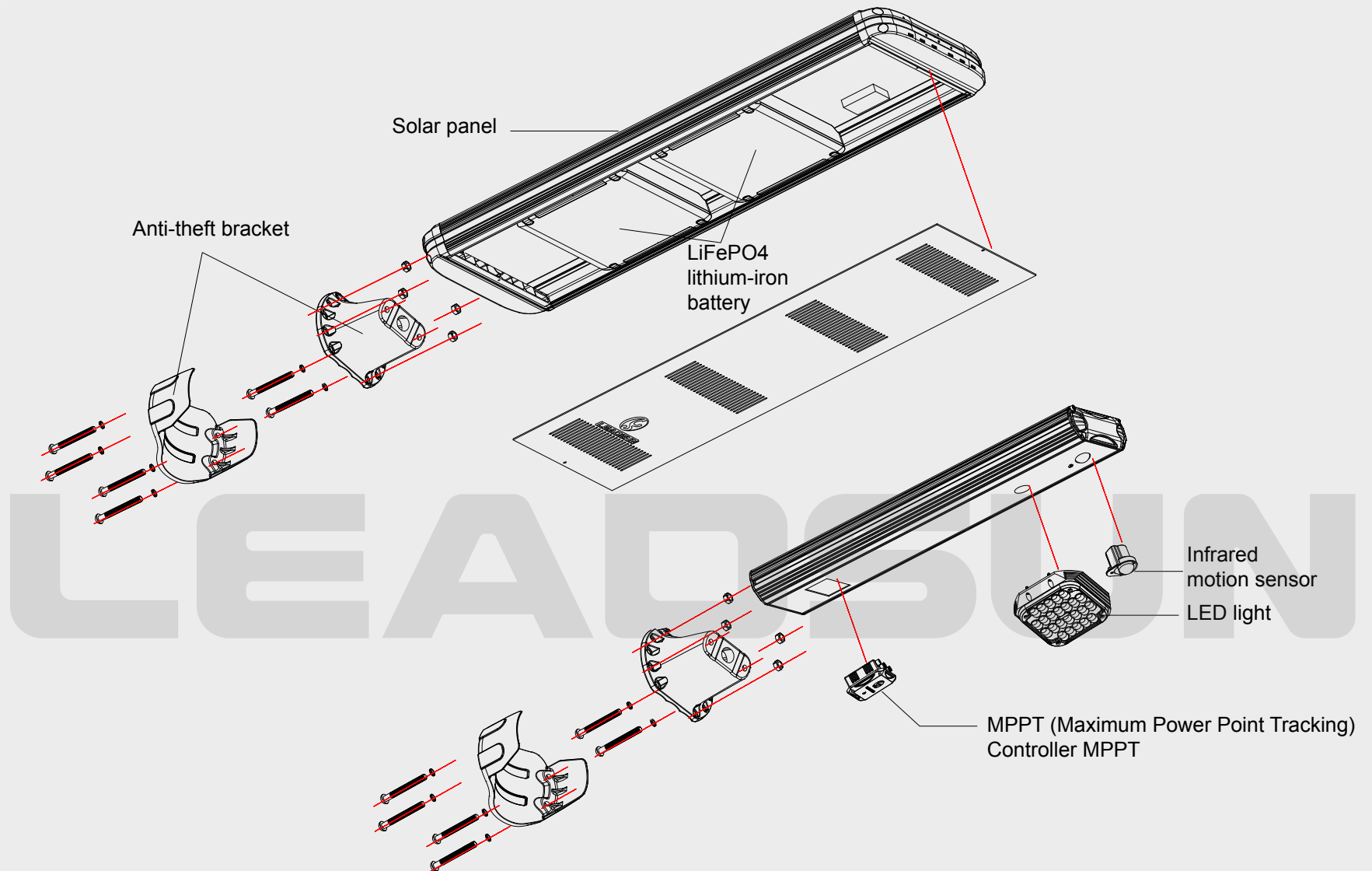
IP65

1



Split Design

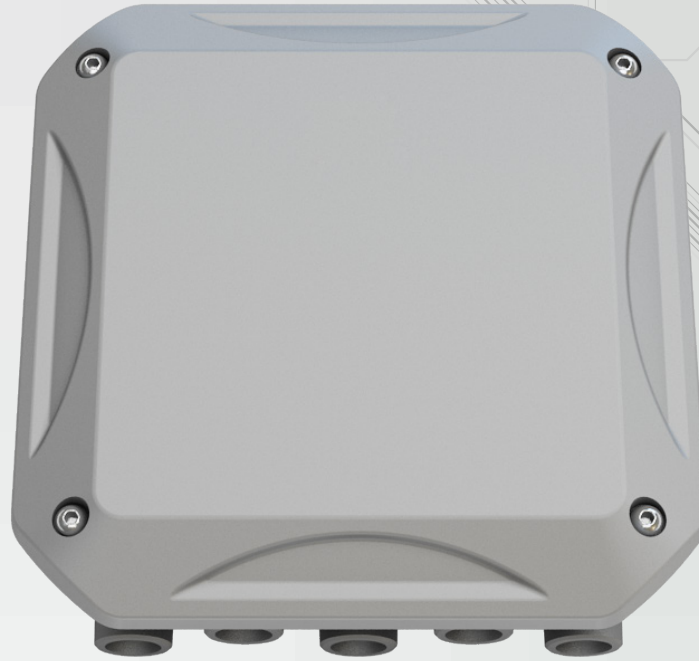
AE2 'Split' offers the "all in one" solar power supply system and single LED light head, both are fully adjustable to pivot 360 degrees whilst providing uniformed lighting distribution ideally suited for illuminating pathways and lane ways etc.



Product Structure

Major components is Modularity design with IP65 rate, which is easy assemble and maintenance.

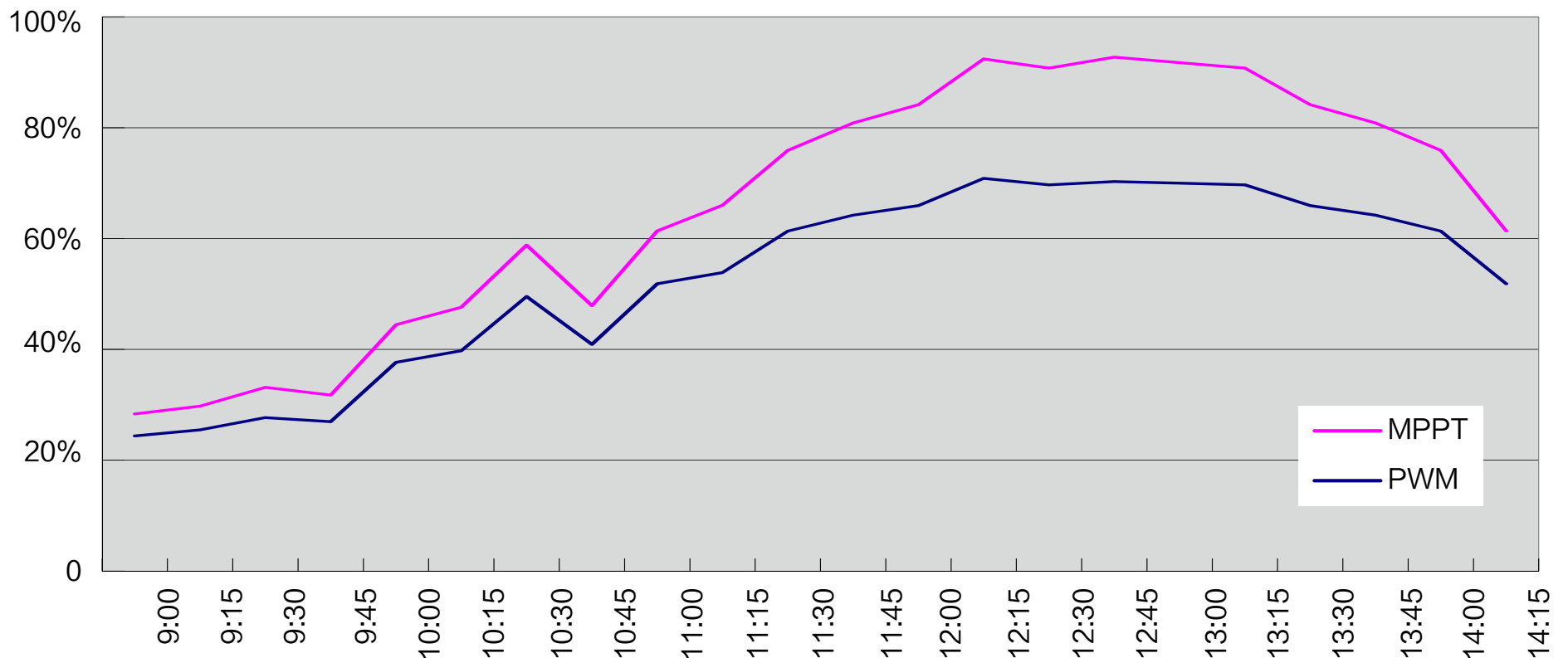
IP65 rated components ensure endurance against harsh weather and keep AE Series free from corrosion and premature failure.

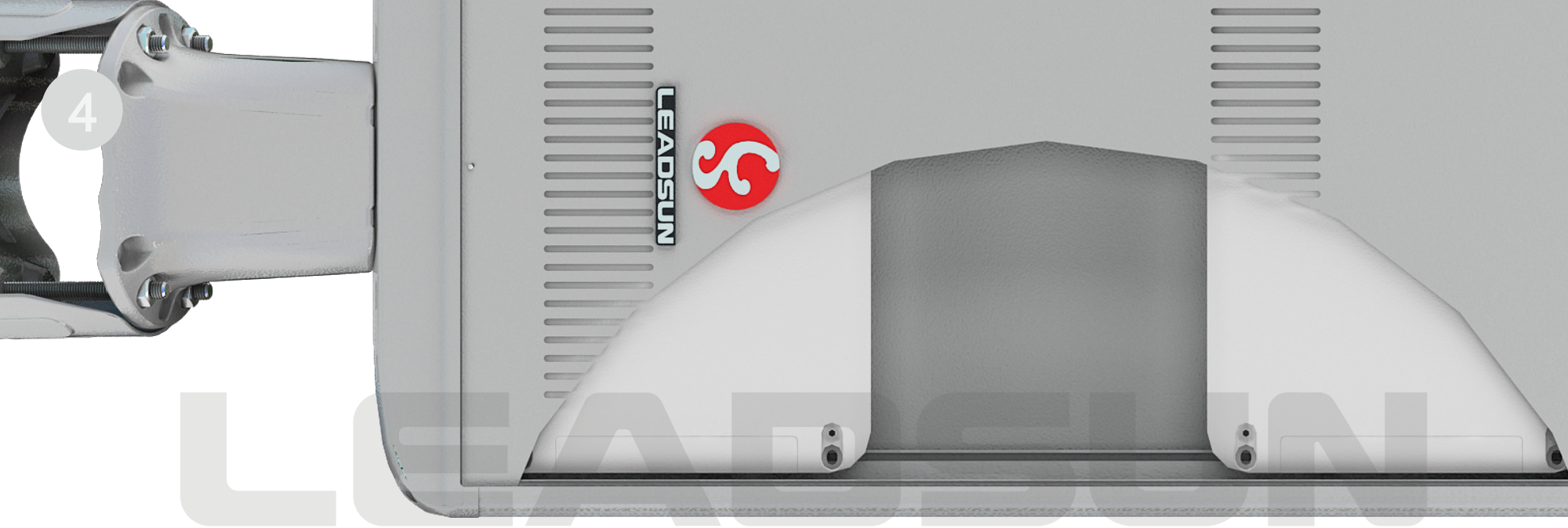


MPPT Controller

MPPT (maximum power point tracking) controller automatically track the maximum power point according to the weather variation. Its charging rate is **16~30%** higher than PWM controller.

Charging efficiency contrast *





Battery Management System

Adopted advanced LiFePO₄ lithium-iron battery. Compared with lead-acid battery, LiFePO₄ battery discharge depth is **4 times** higher and its cycle life is **5 times** longer than lead-acid battery.

Battery long lifespan is up to 8 years with Leadsun patented battery management technology.

5

CREE LED

Adopted CREE 5 watts LED with average light illumination of 130lm @350mA, 85℃.

Bat wing light distribution

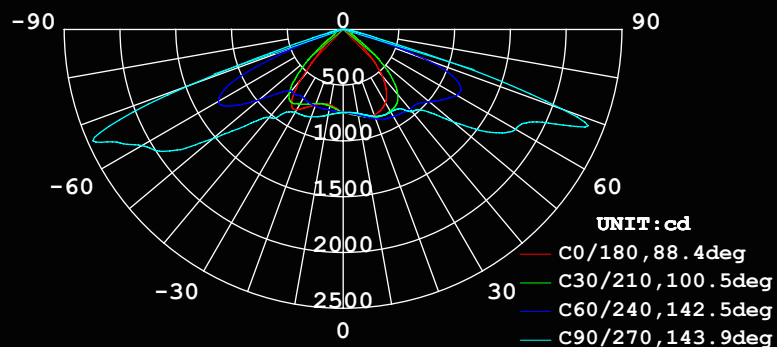
Leadsun new design light distribution lens widely improve illumination effect.

Compared with the last generation product, illumination area enlarge **40%** more, and illumination uniformity does improve up to **200%**.

12W

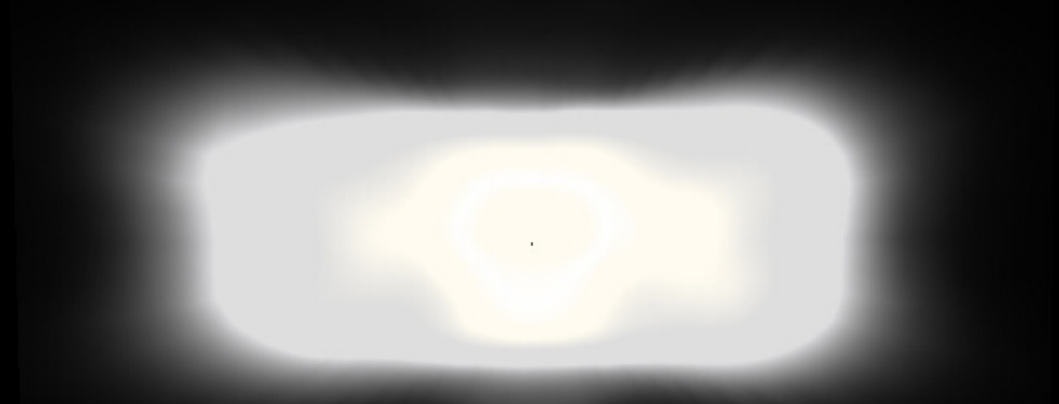
30W

Bat wing light distribution curve



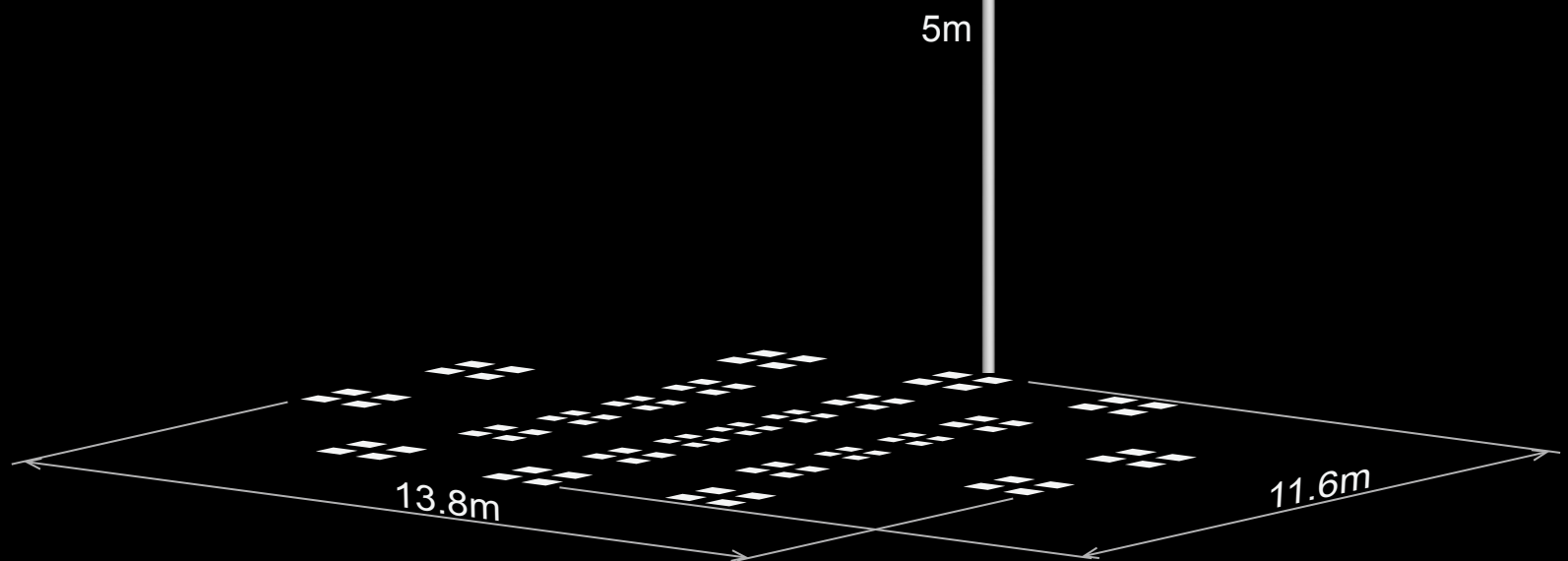
AVERAGE BEAM ANGLE (50%) : 118.8 DEG

Light intensity diagram



Motion detection

The AE2 series comes complete with built-in motion detection system that automatically regular the light soure from full bright (100%) to the energy saving output (30%) to increase battery autonomy.



Infrared motion sensor detection area

LIVESUN[®] Wireless System

By choosing a wireless module (Bluetooth, 433 or GPRS), users can wirelessly control the light, monitor working status, set custom working mode or review historical charging data. AE2 bring endusers a easier way to control their outdoor lighting than even before.



You can do below through LIVESUN:

Control the light

Turn ON or turn OFF the light and change light intensity in the range of 10% to 100%.

Track historical data

Review monthly report to track every day's power generation, inner temperature and detail records for charging and discharge.

Set custom working mode

Users can set their own working mode according to the local solar irradiance or peak sun hours and other lighting requirement.

Real-time supervision

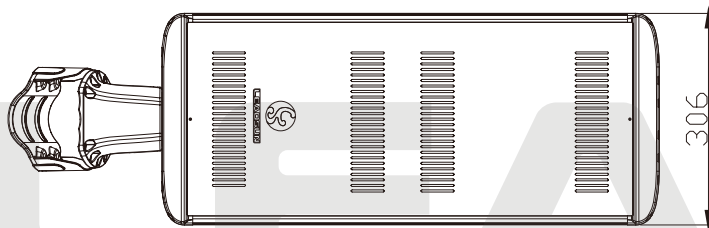
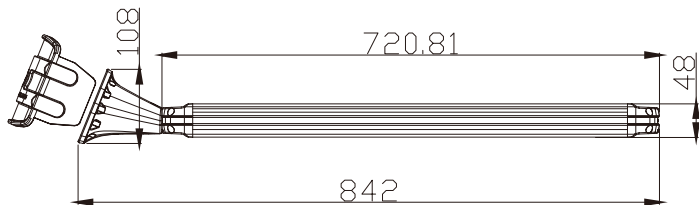
Monitor the status of main components and real time charging / discharging data.

Technical Data

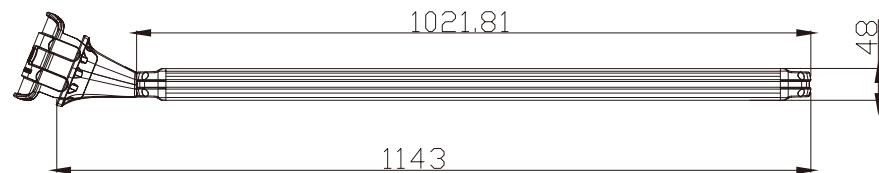
●: Standard, ○: Optional, /: N/A

Solar Power System			RHEA MINI LED Light	
Model No.	AE2S25I	AE2S40L	LSRM12MC-12	LSRM30MC-12
Physical Parameters				
Max. Power of LED Chips			CREE 5W LED	CREE 5W LED
Qty. of LED Chips			10pcs	24pcs
PV Module Power			/	/
Liuthium Battery Capacity			/	/
PIR Sensor			●	●
Wireless System	Bluetooth	/	○	○
	433MH	/	○	○
	GPRS	/	○	○
Physical Dimensions			725×128×74mm	725×128×74mm
Net Weight of Product			3.6Kg	3.8Kg
Light Parameters				
Light Output (Factory setting)			12W	30W
Optical Distribution			Bat Wing	Bat Wing
Visual Angle			140°× 70°	140°× 70°
Color Temperaure			5000K	5000K
Max. Luminous Flux			1440lm	3600lm
Min. Working Time	Bright Mode	/	/	/
	DIM Mode (30%)	/	/	/
Light Photosensitivity			30lx	30lx
Environment Requirement				
Charge Temperature			/	/
Discharge Temperature			/	/
Storage Temperature			-20℃~45℃	-20℃~45℃
Installation Suggest				
Recommended Installation Height			3~6m	5~8m
Recommended Installation Distance			12~22m	25~35m
Recommended Diameter of Lamppost			60~90mm	60~90mm

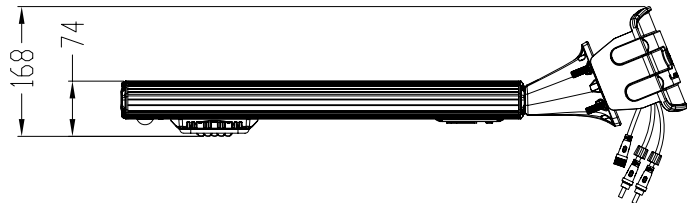
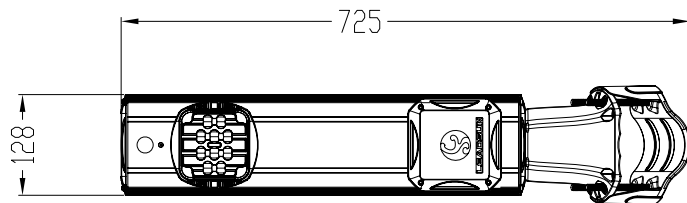
Physical Dimensions (mm)



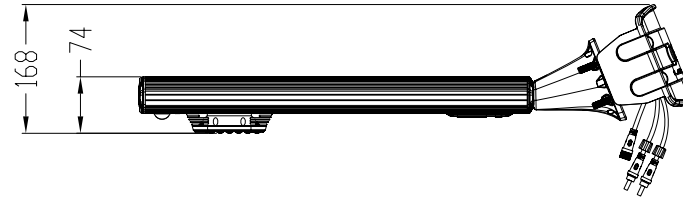
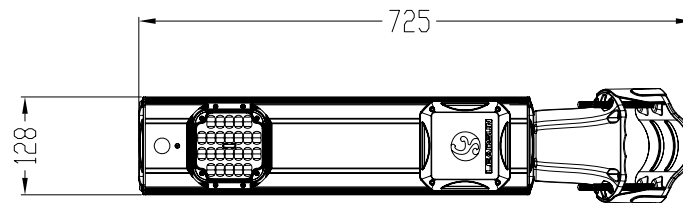
AE2S25I



AE2S40L



LSRM12MC-12



LSRM30MC-12



LEADSUN®

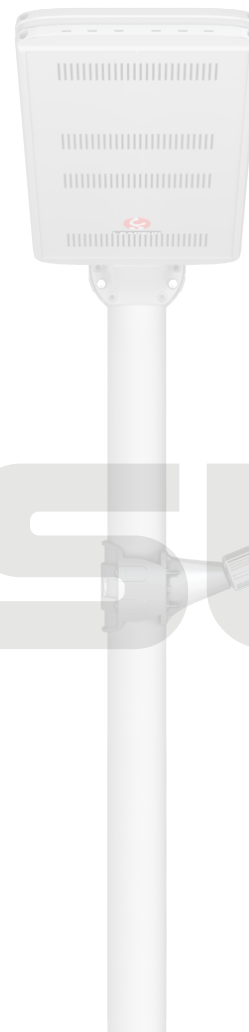
To promote an environmentally sympathetic
and socially conscious world through
superior technology and innovation.

We strive for harmony between technology
and the environment to help people lead
healthier and more productive lives.

LEADSUN

LEADSUN INTERNATIONAL LIMITED reserves the rights to amend and improve the product appearance, construction and function without any prior notification. Please make the original product as the standard in case of any difference in description.

LEADSUN guarantees that this specification has been checked and edited, but does not hold the responsibility for any loss caused.



LEADSUN INTERNATIONAL LIMITED

Tel: +86-756-2289712 Fax: +86-756-8682090

E-mail: sales@leadsunglobal.com

www.leadsunglobal.com

AE2S-A01

