



10 Channel Controller

Comfort and energy savings come naturally with personalized, intelligent control .

The Verve® 10 Channel Controller can be used to command up to 10 electrical loads including combinations of lights, ceiling fans, switched receptacles and thermostats. Using standard wiring practices, wires are run from the breaker box to the Verve control panel, and from the control panel out to the electrical loads. The loads can be controlled directly from the control panel or wirelessly by linking the controller with Verve occupancy sensors, rocker pads and switches.



Features & Benefits

- Provides intelligent control of up to 10 channels of lighting, ceiling fans, thermostats and outlets.
- Easily personalized to enable wireless control of lighting and outlets throughout the home.
- Enables a variety of functions for energy savings, convenience and comfort:
 - Single button all ON or all OFF.
 - Independent or group dimming of lights.
 - Custom lighting scenes for ambiance and energy savings.
 - Pathway lighting for safety and convenience.



10 Channel Controller

Specifications

Input Voltage	120VAC (-10% to +17%), 60Hz
Maximum load	<ul style="list-style-type: none">• 1800W total; 300W per channel• Channels 1 and 2 can be ganged for a 600W load• 15A (1440W max), 20A (1800W max)
Input Frequency	60Hz
Communications	315 MHz EnOcean RF transceiver
Transmission Range	80ft. (25m)
Mounting	Standard 4-gang junction box, 3.5" deep switch box (64 cubic inches)
Dimensions	5.25" H x 9.5" W x 3.2" D (133mm x 241mm x 81mm)
Environment	32° - 86°F (0° - 30°C)
Agency Listing	cULus, FCC, I.C.
Warranty	5 years

Example of typical wiring using multiple 10 Channel Controllers

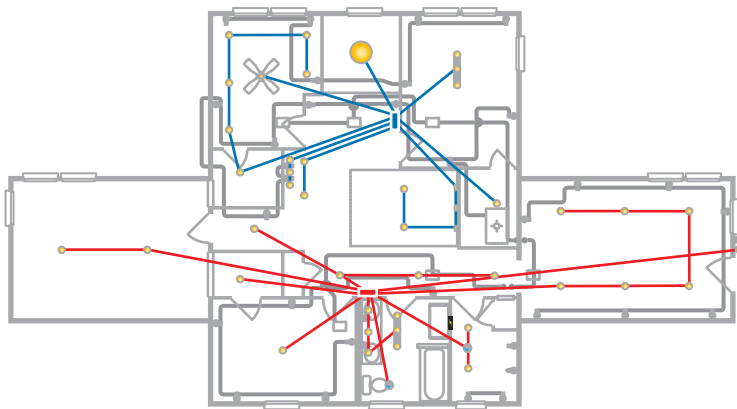


Fig. 1: Wiring runs from the 10 Channel Controller to up to 10 different electrical loads. Link to Verve wireless switches and rocker pads and switch leg wiring can be eliminated.

Ordering information

Item Number	Item Description	Color
X2110HB-W-R	10 Channel Controller	White

Typical Applications

The Verve® 10 Channel Controller can be used in commercial or residential applications to enable on/off switching, dimming and pathway/scene control for lights and outlets as well as on/off switching and temperature setback control of thermostats.



Door/Window Sensor
VDWS-W



Occupancy Sensor, Wall
VOSW-W (shown)

Occupancy Sensor, Ceiling
VOSC-W



Rocker Pads
Single: VRP-W
Double: VDRP-W



Thermostat
Low V: X4103100W3VN
Line V: X41031LOW3VN

VERVE® LIVING SYSTEMS
877-874-8774
vervelivingsystems.com